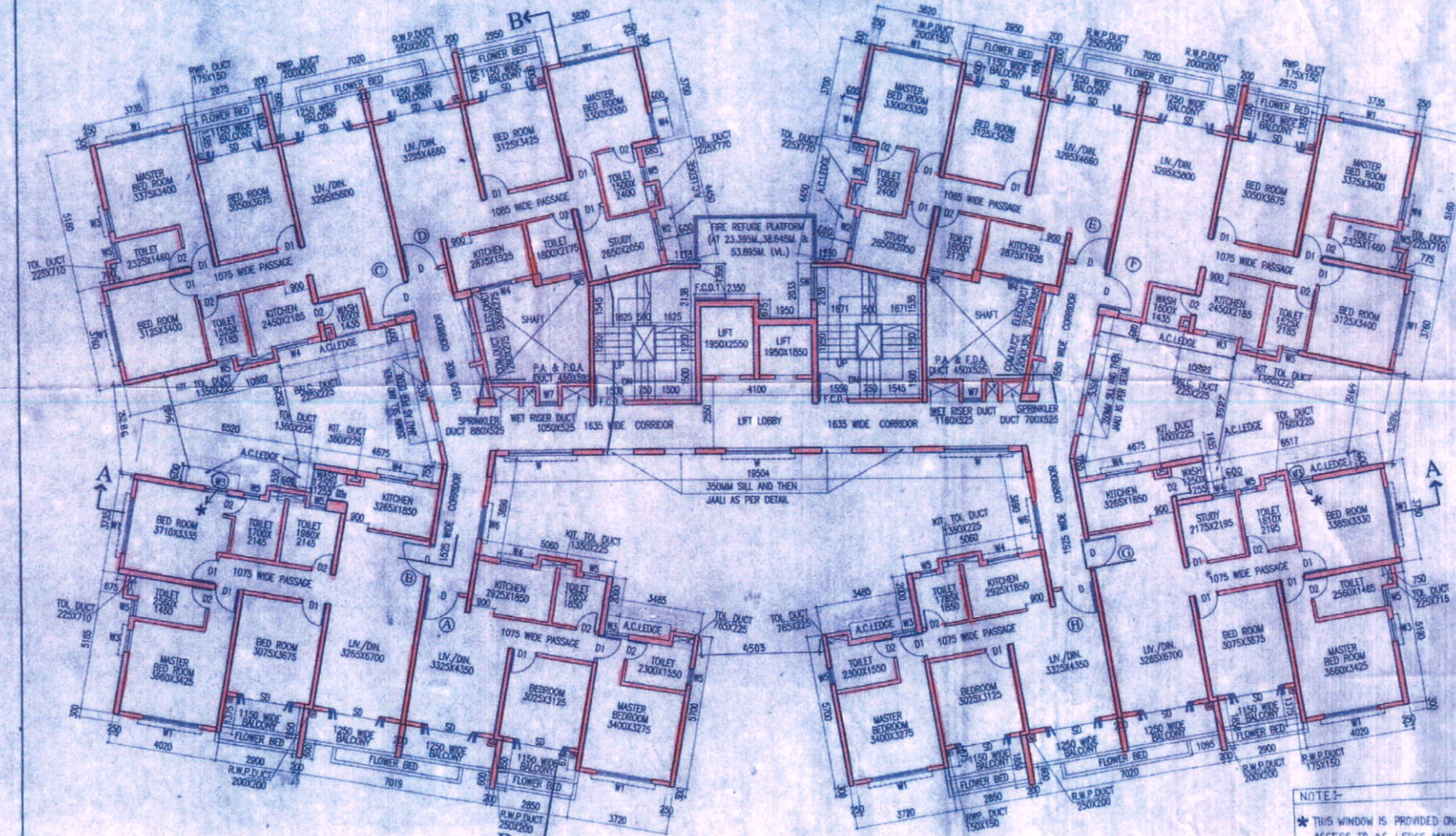
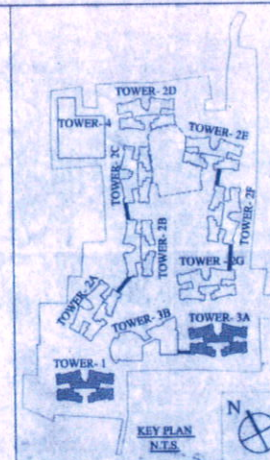


18TH & 19TH FLOOR PLAN



17TH FLOOR PLAN



SCHEDULE OF DOORS & WINDOWS			
NO.	SILL	LINTEL	SIZE
D	2150	2150	1200 X 2150
D1	2150	2150	800 X 2150
D16	250	2300	800 X 2050
D2	2150	2150	750 X 2150
D2a	2150	2150	700 X 2150
D3	2150	2150	1000 X 2150
DW	2400	2400	2985 X 2400
DW1	2400	2400	2345 X 2400
SD	2150	2150	2100 X 2150
SD1	2150	2150	1500 X 2150
F.C.D	2150	2150	1125 X 2150
F.C.D1	2150	2150	1198 X 2150
W	350	2150	2400 X 1800
W1	350	2150	2100 X 1800
W2	350	2150	1200 X 1800
W3	350	2150	850 X 1800
W4	1100	2150	1200 X 1050
W5	1250	2150	600 X 900
W6	350	2150	1200 X 1800
W7	750	2150	700 X 1400
SW	750	2450	1198 X 1700

NAME OF OWNER
NAME OF THE COMPANY

1. M/s. Adva Real Estates Private Limited
2. M/s. Alishan Supply Private Limited
3. M/s. Anchor Vanija Private Limited
4. M/s. Antrama Advisory Private Limited
5. M/s. Antrama Dealers Private Limited
6. M/s. Anvarani Supply Private Limited
7. M/s. Aravaalli Private Limited
8. M/s. Arch Vanija Private Limited
9. M/s. Arpana Consultancy Private Limited
10. M/s. Arpana Tie Up Private Limited
11. M/s. Artino Home Private Limited
12. M/s. Artino Projects Private Limited
13. M/s. Artino Real Estate Private Limited
14. M/s. Avestra Housing Private Limited
15. M/s. Avestra Projects Private Limited
16. M/s. Avestra Infraco Private Limited
17. M/s. Avestra Nirman Private Limited
18. M/s. Avestra Projects Private Limited
19. M/s. Basudev Enclave Private Limited
20. M/s. Basudev Housing Private Limited
21. M/s. Bluebird Tie Up Private Limited
22. M/s. Booster Heights Private Limited
23. M/s. Scooper Nirman Private Limited
24. M/s. Brighthouse Private Limited
25. M/s. Brighthouse Tie Up Private Limited
26. M/s. Chivindhi Vaspaar Private Limited
27. M/s. Crossway Heights Private Limited
28. M/s. Crossway Nirman Private Limited
29. M/s. Dayanand Suppliers Private Limited
30. M/s. Delta Vaspaar Private Limited
31. M/s. Dhangaan Nirman Private Limited
32. M/s. Dhangaan Infraco Private Limited
33. M/s. Dhangaan Realty Private Limited
34. M/s. Dhangaan Residency Private Limited
35. M/s. Dreamland Nirman Private Limited
36. M/s. Elegant Nirman Private Limited
37. M/s. Gajdhan Vinayak Private Limited
38. M/s. Gajdhan Builders Private Limited
39. M/s. Gajdhan Constructions Private Limited
40. M/s. Gajdhan Home Private Limited
41. M/s. Gajdhan Realty Private Limited
42. M/s. Gajdhan Enclave Private Limited
43. M/s. Gajdhan Homes Private Limited
44. M/s. Gajdhan Infraco Private Limited
45. M/s. Gajdhan Nirman Private Limited
46. M/s. Gajdhan Projects Private Limited
47. M/s. Gajdhan Real Estate Private Limited
48. M/s. Ganesh Tracem Private Limited
49. M/s. Ganeshvani Promoters Private Limited
50. M/s. Greenfield Nirman Private Limited
51. M/s. Guidance Vaspaar Private Limited
52. M/s. Gulmarg Vaspaar Private Limited
53. M/s. Hanurang Tie Up Private Limited
54. M/s. Indira Tracem Private Limited
55. M/s. Jainendra Distributors Private Limited
56. M/s. Jainendra Marketing Private Limited
57. M/s. Jainendra Merchants Private Limited
58. M/s. Jainendra Advisory Private Limited
59. M/s. Jainendra Tie Up Private Limited
60. M/s. Jaihind Vaspaar Private Limited
61. M/s. Jaihind Merchants Private Limited
62. M/s. Jaihind Nirman Private Limited
63. M/s. Jaihind Marketing Private Limited
64. M/s. Kalakriti Enclave Private Limited
65. M/s. Kalakriti Homes Private Limited
66. M/s. Kalakriti Housing Private Limited
67. M/s. Kalakriti Properties Private Limited
68. M/s. Kalakriti Realty Private Limited
69. M/s. Kamyabi Consultants Private Limited
70. M/s. Lifelong Enclave Private Limited
71. M/s. LimeLight Nirman Private Limited
72. M/s. Linkrose Constructions Private Limited
73. M/s. Linkrose Housing Private Limited
74. M/s. Linkrose Residency Private Limited
75. M/s. Manohar Dealer Private Limited
76. M/s. Manohar Vanija Private Limited
77. M/s. Matris Sales Private Limited
78. M/s. Maxwell Barter Private Limited
79. M/s. Moonlight Constructions Private Limited
80. M/s. Moonlight Nirman Private Limited
81. M/s. Moonlight Residency Private Limited
82. M/s. Mrudul Advisory Private Limited
83. M/s. Newwave Merchants Private Limited
84. M/s. Original Realty Private Limited
85. M/s. Panchajanya Supply Private Limited
86. M/s. Panchajanya Barter Private Limited
87. M/s. Panchajanya Sales Private Limited
88. M/s. Prabhakar Barter Private Limited
89. M/s. Prabhakar Commercial Private Limited
90. M/s. Prabhakar Dealer Private Limited
91. M/s. Prabhakar Advisory Private Limited
92. M/s. Prabhakar Tie Up Private Limited
93. M/s. Prime Rose Marketing Private Limited
94. M/s. Radial Housing Private Limited
95. M/s. Radial Residency Private Limited
96. M/s. Rishabh Constructions Private Limited
97. M/s. Rossmore Distributors Private Limited
98. M/s. Rossmore Tie Up Private Limited
99. M/s. Sadabahar Vaspaar Private Limited
100. M/s. Sagun Advisory Services Private Limited
101. M/s. Sanghvi Vanija Private Limited
102. M/s. Sangam Vaspaar Private Limited
103. M/s. Sanyal Vanija Private Limited
104. M/s. Shivasthal Dealer Private Limited
105. M/s. Shivasthal Sales Private Limited
106. M/s. Siddha Style Barter Private Limited
107. M/s. Siddhant Suppliers Private Limited
108. M/s. Skyline Vinayak Private Limited
109. M/s. Skylink Merchants Private Limited
110. M/s. Spandan Suppliers Private Limited
111. M/s. Splendor Vaspaar Private Limited
112. M/s. Style Merchants Private Limited
113. M/s. Subhij Vaspaar Private Limited
114. M/s. Sunmar Vaspaar Private Limited
115. M/s. Sunshine Barter Private Limited
116. M/s. Superior Complex Private Limited
117. M/s. Superior Home Private Limited
118. M/s. Surbhoni Advisory Private Limited
119. M/s. Sursarita Advisory Services Private Limited
120. M/s. Sursarita Consultants Private Limited
121. M/s. Swastik Barter Private Limited
122. M/s. Terapanth Consultancy Services Private Limited
123. M/s. Timeless Real Estate Private Limited
124. M/s. Topcon Vaspaar Private Limited
125. M/s. Vichitra Advisory Services Private Limited

CERTIFICATE OF STRUCTURAL ENGINEER
CERTIFY THAT THE STRUCTURAL DRAWING AND DESIGN OF BOTH THE FOUNDATION AND SUPERSTRUCTURE OF THE BUILDING HAS BEEN MADE CONSIDERING THE SOIL TEST REPORT, AS PER THE RULES AND REGULATIONS MADE UNDER THE ACT AND ALSO CONSIDERING ALL POSSIBLE LOADS, SEISMIC LOAD AND THE MOMENTS GENERATED BY THE PROPOSED STRUCTURE AS PER THE BUREAU OF INDIAN STANDARD AND NATIONAL BUILDING CODE OF INDIA AND CERTIFIED THAT IT IS SAFE AND STABLE IN ALL RESPECT AND THESE PROVISIONS SHALL BE ADHERED TO DURING THE CONSTRUCTION.

SANJIV J. PATEKAR
REGISTERED CIVIL ENGINEER
R.C.E. No. 418232-4
ST-19/2019

SIGNATURE OF STRUCTURAL ENG.

CERTIFICATE OF ARCHITECT
I CERTIFY THAT ALL THE ARCHITECTURAL DRAWINGS OF THE PROJECT AT R.S.DAG NOS. 473, 474, 475, 476, 477, 478, 479, 480, 481, 482, 483, 484, 485, 486, 487, 488, 489, 490, 491, 492, 493, 494, 495, 496, 497, 498, 499, 500, 501, 502, 503, 504, 505, 506, 507, 508, 509, 510, 511, 512, 513, 514, 515, 516, 517, 518, 519, 520, 521, 522, 523, 524, 525, 526, 527, 528, 529, 530, 531, 532, 533, 534, 535, 536, 537, 538, 539, 540, 541, 542, 543, 544, 545, 546, 547, 548, 549, 550, 551, 552, 553, 554, 555, 556, 557, 558, 559, 560, 561, 562, 563, 564, 565, 566, 567, 568, 569, 570, 571, 572, 573, 574, 575, 576, 577, 578, 579, 580, 581, 582, 583, 584, 585, 586, 587, 588, 589, 590, 591, 592, 593, 594, 595, 596, 597, 598, 599, 600, 601, 602, 603, 604, 605, 606, 607, 608, 609, 610, 611, 612, 613, 614, 615, 616, 617, 618, 619, 620, 621, 622, 623, 624, 625, 626, 627, 628, 629, 630, 631, 632, 633, 634, 635, 636, 637, 638, 639, 640, 641, 642, 643, 644, 645, 646, 647, 648, 649, 650, 651, 652, 653, 654, 655, 656, 657, 658, 659, 660, 661, 662, 663, 664, 665, 666, 667, 668, 669, 670, 671, 672, 673, 674, 675, 676, 677, 678, 679, 680, 681, 682, 683, 684, 685, 686, 687, 688, 689, 690, 691, 692, 693, 694, 695, 696, 697, 698, 699, 700, 701, 702, 703, 704, 705, 706, 707, 708, 709, 710, 711, 712, 713, 714, 715, 716, 717, 718, 719, 720, 721, 722, 723, 724, 725, 726, 727, 728, 729, 730, 731, 732, 733, 734, 735, 736, 737, 738, 739, 740, 741, 742, 743, 744, 745, 746, 747, 748, 749, 750, 751, 752, 753, 754, 755, 756, 757, 758, 759, 760, 761, 762, 763, 764, 765, 766, 767, 768, 769, 770, 771, 772, 773, 774, 775, 776, 777, 778, 779, 780, 781, 782, 783, 784, 785, 786, 787, 788, 789, 790, 791, 792, 793, 794, 795, 796, 797, 798, 799, 800, 801, 802, 803, 804, 805, 806, 807, 808, 809, 810, 811, 812, 813, 814, 815, 816, 817, 818, 819, 820, 821, 822, 823, 824, 825, 826, 827, 828, 829, 830, 831, 832, 833, 834, 835, 836, 837, 838, 839, 840, 841, 842, 843, 844, 845, 846, 847, 848, 849, 850, 851, 852, 853, 854, 855, 856, 857, 858, 859, 860, 861, 862, 863, 864, 865, 866, 867, 868, 869, 870, 871, 872, 873, 874, 875, 876, 877, 878, 879, 880, 881, 882, 883, 884, 885, 886, 887, 888, 889, 890, 891, 892, 893, 894, 895, 896, 897, 898, 899, 900, 901, 902, 903, 904, 905, 906, 907, 908, 909, 910, 911, 912, 913, 914, 915, 916, 917, 918, 919, 920, 921, 922, 923, 924, 925, 926, 927, 928, 929, 930, 931, 932, 933, 934, 935, 936, 937, 938, 939, 940, 941, 942, 943, 944, 945, 946, 947, 948, 949, 950, 951, 952, 953, 954, 955, 956, 957, 958, 959, 960, 961, 962, 963, 964, 965, 966, 967, 968, 969, 970, 971, 972, 973, 974, 975, 976, 977, 978, 979, 980, 981, 982, 983, 984, 985, 986, 987, 988, 989, 990, 991, 992, 993, 994, 995, 996, 997, 998, 999, 1000.

SIGNATURE OF ARCHITECT

CERTIFICATE OF GEO - TECHNICAL ENGINEER
IT IS CERTIFIED THAT THE COMPREHENSIVE GEO-TECHNICAL REPORT ON SOIL INVESTIGATION HAS BEEN PREPARED BY ME FOR DESIGN AND CALCULATION OF THE FOUNDATION BY ANALYSING THE SOIL SAMPLES FOR ESTIMATING THE BEARING CAPACITY OF THE SOIL ON WHICH FOUNDATION OF THE STRUCTURE WILL BE CONSTRUCTED. I SHALL ALSO CHECK THE NATURE OF THE SOIL AFTER EXCAVATION AT SITE SO THAT FOUNDATION IS EXTENDED UP TO THE APPROPRIATE DEPTH THAT HAS BEEN PROPOSED IN THE GEO-TECHNICAL REPORT.

SHIVAJI KUTER MITAL, B.E. CIVIL
GEO-TECHNICAL ENGINEER
ENROLLMENT NO. 0126 10000000000

SIGNATURE OF GEO - TECHNICAL ENGINEER

SIGNATURE OF TOWN PLANNER OR URBAN DESIGNER

SIGNATURE OF STRUCTURAL REVIEWER

TITLE: 17TH, 18TH & 19TH FLOOR PLAN (TOWER - 11) (TOWER - 3A IS SIMILAR)

PROJECT: REVISED (G-11) (H-G-VII) AND (G-XIX) STORED RESIDENTIAL BHATENDA, R.S.DAG NOS. 473, 474, 475, 476, 477, 478, 479, 480, 481, 482, 483, 484, 485, 486, 487, 488, 489, 490, 491, 492, 493, 494, 495, 496, 497, 498, 499, 500, 501, 502, 503, 504, 505, 506, 507, 508, 509, 510, 511, 512, 513, 514, 515, 516, 517, 518, 519, 520, 521, 522, 523, 524, 525, 526, 527, 528, 529, 530, 531, 532, 533, 534, 535, 536, 537, 538, 539, 540, 541, 542, 543, 544, 545, 546, 547, 548, 549, 550, 551, 552, 553, 554, 555, 556, 557, 558, 559, 560, 561, 562, 563, 564, 565, 566, 567, 568, 569, 570, 571, 572, 573, 574, 575, 576, 577, 578, 579, 580, 581, 582, 583, 584, 585, 586, 587, 588, 589, 590, 591, 592, 593, 594, 595, 596, 597, 598, 599, 600, 601, 602, 603, 604, 605, 606, 607, 608, 609, 610, 611, 612, 613, 614, 615, 616, 617, 618, 619, 620, 621, 622, 623, 624, 625, 626, 627, 628, 629, 630, 631, 632, 633, 634, 635, 636, 637, 638, 639, 640, 641, 642, 643, 644, 645, 646, 647, 648, 649, 650, 651, 652, 653, 654, 655, 656, 657, 658, 659, 660, 661, 662, 663, 664, 665, 666, 667, 668, 669, 670, 671, 672, 673, 674, 675, 676, 677, 678, 679, 680, 681, 682, 683, 684, 685, 686, 687, 688, 689, 690, 691, 692, 693, 694, 695, 696, 697, 698, 699, 700, 701, 702, 703, 704, 705, 706, 707, 708, 709, 710, 711, 712, 713, 714, 715, 716, 717, 718, 719, 720, 721, 722, 723, 724, 725, 726, 727, 728, 729, 730, 731, 732, 733, 734, 735, 736, 737, 738, 739, 740, 741, 742, 743, 744, 745, 746, 747, 748, 749, 750, 751, 752, 753, 754, 755, 756, 757, 758, 759, 760, 761, 762, 763, 764, 765, 766, 767, 768, 769, 770, 771, 772, 773, 774, 775, 776, 777, 778, 779, 780, 781, 782, 783, 784, 785, 786, 787, 788, 789, 790, 791, 792, 793, 794, 795, 796, 797, 798, 799, 800, 801, 802, 803, 804, 805, 806, 807, 808, 809, 810, 811, 812, 813, 814, 815, 816, 817, 818, 819, 820, 821, 822, 823, 824, 825, 826, 827, 828, 829, 830, 831, 832, 833, 834, 835, 836, 837, 838, 839, 840, 841, 842, 843, 844, 845, 846, 847, 848, 849, 850, 851, 852, 853, 854, 855, 856, 857, 858, 859, 860, 861, 862, 863, 864, 865, 866, 867, 868, 869, 870, 871, 872, 873, 874, 875, 876, 877, 878, 879, 880, 881, 882, 883, 884, 885, 886, 887, 888, 889, 890, 891, 892, 893, 894, 895, 896, 897, 898, 899, 900, 901, 902, 903, 904, 905, 906, 907, 908, 909, 910, 911, 912, 913, 914, 915, 916, 917, 918, 919, 920, 921, 922, 923, 924, 925, 926, 927, 928, 929, 930, 931, 932, 933, 934, 935, 936, 937, 938, 939, 940, 941, 942, 943, 944, 945, 946, 947, 948, 949, 950, 951, 952, 953, 954, 955, 956, 957, 958, 959, 960, 961, 962, 963, 964, 965, 966, 967, 968, 969, 970, 971, 972, 973, 974, 975, 976, 977, 978, 979, 980, 981, 982, 983, 984, 985, 986, 987, 988, 989, 990, 991, 992, 993, 994, 995, 996, 997, 998, 999, 1000.

ARCHITECTS	AGRAWAL & AGRAWAL			
	BARODA	KOLKATA	DEALT	CHECKED
SCALE				
1:100	06-12-18	7 OF 41	SUJIP	SHILA

NOTE: THIS WINDOW IS PROVIDED ONLY FOR ACCESS TO A.C. LEDGE MAINTENANCE OF A.C.

Agrawal
Authorized Signatory
SIGNATURE OF OWNER

7/1

ARCHITECT: MONAL ANANDHAR	Enrollment No: AC 44/NKDA/10/00020
CIVIL/STRUCTURAL ENGINEER: SANKU J. DASGUPTA	Enrollment No: STCR/NKDA/10/00030
GEOTECHNICAL ENGINEER: SHYAMAL K MITRA	Enrollment No: GTER-NDCO/07/00010
TOWN PLANNER/URBAN DESIGNER: SUDIP RAJAN SARKAR	Enrollment No: TPER/NKDA/10/00031
STRUCTURAL REVIEWER: SANKU GUHA	Enrollment No: STCR/NKDA/15/00013

STRUCTURAL DRAWINGS, STRUCTURAL DESIGN CALCULATIONS & SOIL TEST REPORT ARE NOT CHECKED AND KEPT FOR RECORDS ONLY.

NOTE: The NCC has been issued on the basis of documents submitted by the applicant and forwarded by the AEA. Executive Officer, North 24 Panchayat. If there was material misrepresentation of fact or fraudulently or in any way of suppression of fact in connection with the above project including the concerned land, plans, drawings, design etc., then, the NCC shall stand cancel.

NEW TOWN KOLKATA DEVELOPMENT AUTHORITY

No Objection Certificate for Sanction of Building Plan for Construction Purpose

Memo No. 2622(A)/NKDA/BPA-01(3)/2014

Date: 20.07.2015

Building Particulars: Proposed apartment (G+11) (B19+VI) & (G+11) at Sector Residential Building near Sector 3, Line 25, P. S. Rajarhat, North 24 P.S.

Note: The proposal is recommended for approval, subject to submission of environment clearance.

Sayantani Majumdar
Assistant Architect
New Town Kolkata Development Authority

Sukrit Chatterjee
Chief Architect
New Town Kolkata Development Authority

SANCTIONED & APPROVED

[Signature]
Executive Officer
Rajarhat Panchayat Society

Digitally signed by Sanku J. Dasgupta
DN: cn=Sanku J. Dasgupta, o=New Town Kolkata Development Authority, ou=New Town Kolkata Development Authority, email=sanku.j.dasgupta@ntkda.org